

# *DrayTek*

Product Guide



#### Vigor 2865 Router

VDSL2 (Superfast Fibre) and Gigabit Ethernet WAN Router  
 Multi-WAN Gigabit Performance Router with Load-Balancing & Failover  
 Up to 950Mbps Firewall Throughput for Ethernet WAN  
 5+1 Gigabit RJ-45 LAN Ports  
 Up to 800Mbps VPN Throughput with IPsec acceleration  
 32 LAN-to-LAN & Remote Teleworker VPN Tunnels  
 16 DrayTek SSL VPN or OpenVPN Tunnels  
 4G/LTE with dual-SIMs for second backup telco ('L' models)  
 AC1300 - 11ac 'Wave 2' Dual Band Wireless with Mesh ('ac' models)  
 8 LAN Subnets with VLANs (Port-based / 802.1q)  
 SPI Firewall and Content Filtering



#### Vigor 2927 Router

Gigabit Dual-WAN Ethernet WAN Router with Load Balancing & Failover  
 Up to 950Mbps Throughput per WAN interface, 1800Mbps in total  
 Up to 300Mbps IPsec VPN Throughput  
 50 LAN-to-LAN & Remote Teleworker VPN Tunnels  
 25 DrayTek SSL VPN Tunnels  
 5+1 Gigabit RJ-45 LAN Ports  
 8 LAN Subnets with VLANs (Port-based / 802.1q)  
 SPI Firewall and Content Filtering



#### Vigor 2962 Router

Dual-WAN, 2.5 Gigabit, Ethernet & SFP WAN Router  
 Load Balancing & Failover with Route Policy for advanced routing management  
 Up to 2.2Gbps Total Throughput for single or multi-WAN configurations  
 Manage larger networks with 300k sessions, BGP & OSPF  
 Up to 900Mbps IPsec VPN Throughput  
 200 LAN-to-LAN & Remote Teleworker VPN Tunnels  
 50 DrayTek SSL VPN or OpenVPN Tunnels  
 Flexible port configuration, up to 5 LAN ports with 2.5GbE, SFP & RJ-45 Gigabit Ports  
 20 LAN Subnets with VLANs (Port-based / 802.1q)  
 SPI Firewall and Content Filtering



#### Vigor 3910 Router

Multi-WAN Router with 10Gb WAN Ethernet and Fibre WAN Router(RJ-45 & SFP+)  
 High-performance VPN Concentrator  
 500 LAN-to-LAN VPN Tunnels  
 200 DrayTek SSL VPN Tunnels  
 8x Switchable LAN or WAN Ports  
 Load Balance up to 8 WAN interfaces:  
 2x 10GbE SFP+ LAN/WAN Ports  
 2x 2.5GbE RJ-45 LAN/WAN Ports  
 4x Gigabit RJ-45 LAN/WAN Ports  
 4x Dedicated Gigabit RJ-45 LAN Ports  
 50 LAN Subnets with VLANs (Port, 802.1q)

### DrayTek DSL Modems



DrayTek DSL Modems are ideal for connecting any Router or Firewall to Superfast FTTC, Ultrafast G.fast and ADSL lines. Designed for stability, DrayTek's DSL modems are extensively tested for compatibility with Openreach's FTTC and G.fast networks.

The DrayTek Vigor 166 and Vigor 130 modems are pre-configured to work with UK DSL networks, straight out of the box.

	G.Fast (BT Ultrafast Fibre)	VDSL2 (BT Superfast Fibre/FTTC)	ADSL2+	LAN Ports
Vigor 130		■	■	1
Vigor 166	■	■	■	2



### VigorSwitch G1080

#### Managed Smart 8-Port Gigabit Switch

- 8 Port Gigabit Managed Switch
- Ultra compact form factor
- Wall Mountable
- Fanless (Silent) Operation
- Ultra-low power consumption
- Can be powered by USB port on PC or router  
(requires optional USB/DC cable 'HVUSB1')
- 802.3az Power Saving
- 802.1q VLANs (Tag & Port-based)
- QoS for Application traffic prioritisation
- Link Aggregation (LACP) for ports 7 & 8
- IGMP Snooping (Up to 128 Multicast Groups)



### VigorSwitch G1280

#### Managed Smart 24-Port Gigabit Switch

- 24 x RJ-45 Gigabit Ethernet Ports
- 4 x RJ-45 / SFP Gigabit Ethernet Ports
- Cloud Managed with VigorACS
- 802.1q VLANs with Dynamic MAC-based, Voice & Surveillance VLAN
- ONVIF IP Camera Surveillance Management with PoE Device Check
- Access Control List (ACL) for port & traffic level security
- Port Mirroring & Link Aggregation
- IGMP Snooping & Querying
- IPv4 and IPv6 Support with IP Conflict Prevention
- Centrally managed or standalone operation



### VigorSwitch G2280x

#### Managed Smart 24-Port Gigabit Switch with 10G Uplinks

- 24 x RJ-45 Gigabit Ethernet Ports
- 4 x SFP+ 10GbE Ports for Uplink / Fibre
- 802.1q VLANs (Tag, Port & MAC-based)
- VLAN Routing & Static Route with DHCP server / relay
- Virtual Router Redundancy Protocol
- QoS for Application traffic prioritisation
- 802.1x RADIUS / TACACS+ Port Authentication with Accounting
- Voice VLAN for QoS (OUI Mode)
- Access Control List (ACL)
- Port Mirroring & Link Aggregation
- IGMP Snooping/Querier (Up to 256 Multicast Groups)
- IPv4 and IPv6 Support
- Hardware Monitor with smart fan control
- Centrally managed or standalone operation
- Console Port



**VigorSwitch P1092**

**Managed Smart 8-Port PoE+ Gigabit Switch**

8 PoE+ Ethernet Ports & 2 SFP Ports

- 8+2 Port Gigabit Managed Smart Switch
- PoE (Power-over-Ethernet) for IP phones, wireless access points, IP Cameras etc.
- 110W total Power budget (Max 30W per port)
- 802.3af (PoE) and 802.3at (High Power PoE)
- Fanless (Silent) Operation
- 802.3az Power Saving
- 802.1q VLANs (Tag & Port-based)
- QoS for Application traffic prioritisation
- Link Aggregation (GE7/GE8, SFP1 / SFP2)
- IGMP Snooping (Up to 128 Multicast Groups)
- Managed via compatible DrayTek Router or standalone operation



**VigorSwitch P1280**

**Smart Managed Gigabit Switch with 24 Gigabit PoE+ Ports & 4 SFP Ports**

•24 x RJ-45 Gigabit Ethernet Ports with PoE+

- 4 x RJ-45 / SFP Gigabit Ethernet Ports
- 340-watt Power-over-Ethernet budget for demanding applications
- Cloud Managed with VigorACS
- 802.1q VLANs with Dynamic MAC-based, Voice & Surveillance VLAN
- ONVIF IP Camera Surveillance Management with PoE Device Check
- Access Control List (ACL) for port & traffic level security
- Port Mirroring & Link Aggregation
- IGMP Snooping & Querying
- IPv4 and IPv6 Support with IP Conflict Prevention
- Centrally managed or standalone operation



**VigorSwitch P2280x**

**10GbE Gigabit Switch with 24 Gigabit PoE+ Ports & 4 10GbE SFP+ Uplink Ports**

•24 x RJ-45 Gigabit Ethernet Ports with PoE+

- 4 x SFP+ 10GbE Ports for Uplink / Fibre
- PoE (Power-over-Ethernet) for IP phones, wireless access points, IP Cameras etc.
- Generous Power budget (400W total)
- 802.3af (PoE) and 802.3at (High Power PoE)
- 802.1q VLANs (Tag, Port & MAC-based)
- VLAN Routing & Static Route with DHCP server / relay
- Virtual Router Redundancy Protocol
- QoS for Application traffic prioritisation
- 802.1x RADIUS / TACACS+ Port Authentication with Accounting
- Voice VLAN for QoS (OUI Mode)
- Access Control List (ACL)
- Port Mirroring & Link Aggregation
- IGMP Snooping/Querier (Up to 256 Multicast Groups)
- IPv4 and IPv6 Support
- Hardware Monitor with smart fan control
- Centrally managed or standalone operation
- Console Port



**VigorSwitch P2540x**

**10GbE Gigabit Switch with 48 Gigabit PoE+ Ports & 6 10GbE SFP+ Uplink Ports**

•48 x RJ-45 Gigabit Ethernet Ports with PoE+

- 6 x SFP+ 10GbE Ports for Uplink / Fibre
- PoE (Power-over-Ethernet) for IP phones, wireless access points, IP Cameras etc.
- 400-watt Power-over-Ethernet budget
- 802.1q VLANs with Dynamic MAC-based, Voice & Surveillance VLAN
- VLAN Routing & Static Route with DHCP server / relay
- Virtual Router Redundancy Protocol
- QoS for Application traffic prioritisation
- 802.1x RADIUS / TACACS+ Port Authentication with Accounting
- Voice VLAN for QoS (OUI Mode)
- Access Control List (ACL)
- Port Mirroring & Link Aggregation
- IGMP Snooping & Querying
- IPv4 and IPv6 Support with IP Conflict Prevention
- Hardware Monitor with smart fan control
- Centrally managed or standalone operation
- Console Port



### VigorAP 802

#### Mesh Wireless 802.11ac Range Extender & Access Point

- Mesh Wireless Access Point and Range Extender
- AC1200 Dual Band Wireless
- Convenient and tidy UK Plug design
- Gigabit LAN port for Ethernet bridging
- Multi-SSID over Mesh – **New!** Separate internal and Guest networks over Mesh (*requires firmware 1.3.2, available now*)
- Centrally Managed or Standalone operation
- Advanced Access Control with Mobile Device Management and Station Control



### VigorAP 903

#### Mesh Wireless 802.11ac Range Extender & Access Point

- Mesh Wireless Access Point and Range Extender
- AC1300 - 11ac 'Wave 2' Dual Band Wireless
- WPA3 Security – **New!**
- Power through 802.3af PoE or supplied DC power adapter
- 5 Gigabit LAN ports
- Multi-SSID over Mesh – **New!** Separate internal and Guest networks over Mesh (*requires firmware 1.3.4, available now*)
- Centrally Managed or Standalone operation
- Advanced Access Control with Mobile Device Management and Station Control



### VigorAP 912C

#### Ceiling Mesh Wireless 802.11ac Range Extender & Access Point

- Ceiling-mount Mesh Wireless Access Point and Range Extender
- AC1200 - 11ac 'Wave 2' Dual Band Wireless
- Power through 802.3af PoE or DC power adapter
- Multi-SSID over Mesh – **New!** Separate internal and Guest networks over Mesh
- Centrally Managed or Standalone operation
- Advanced Access Control with Mobile Device Management and Station Control



### VigorAP 1000C

#### Tri-Band Ceiling-mount Mesh Wireless 802.11ac Access Point

- Ceiling-mount Mesh Wireless Access Point and Range Extender
- Secondary 5GHz radio – **New!** Dedicated Mesh backhaul, or higher client density
- AC2200 - 11ac 'Wave 2' Tri Band Wireless
- Multi-SSID over Mesh – **New!** Separate internal and Guest networks over Mesh
- Power through 802.3at PoE+ or DC power adapter
- 2nd Gigabit Ethernet port
- Centrally Managed or Standalone operation



### VigorAP 918R Series

#### Outdoor 802.11ac Mesh Wireless Access Point

- Outdoor Mesh Wireless Access Point and Range Extender
- IP67 - Designed to provide reliable wireless outdoors in all conditions
- AC1300 - 11ac 'Wave 2' Dual Band Wireless with Omni-Directional Antennas
- 5GHz High-Gain Directional Antenna, up to 866Mbps Point-to-Point link (RPD model)
- Gigabit Ethernet port with Power over Ethernet Input
- VigorAP 918RPD provides 2nd Gigabit Ethernet port with PoE Output
- Centrally Managed or Standalone operation

**VigorAP 960C****Ceiling or Wall Mounted WiFi 6 Mesh Wireless PoE Access Point**

WiFi 6 Mesh Wireless Access Point and Range Extender  
Ceiling or Wall mounted  
AX1800 - 11ax Dual Band Wireless  
WPA3 – Stronger Security with WPA3 Personal & Enterprise  
Self-Healing Wireless Mesh with VLAN support  
Power through 802.3af PoE or DC power adapter  
Centrally Managed or Standalone operation  
Advanced Access Control with Mobile Device Management and Station Control

**VigorAP 1060C****Ceiling or Wall Mounted WiFi 6 Mesh Wireless PoE Access Point**

WiFi 6 Mesh Wireless Access Point and Range Extender  
Ceiling or Wall mounted  
AX3600 - 11ax Dual Band Wireless  
WPA3 – Stronger Security with WPA3 Personal & Enterprise  
Self-Healing Wireless Mesh with VLAN support  
Power through 802.3at PoE or DC power adapter  
Centrally Managed or Standalone operation  
Advanced Access Control with Mobile Device Management and Station Control



### DrayTek VigorACS - Central Management Platform

A cloud platform which can manage most DrayTek products - routers, wireless access points and Ethernet switches, giving you complete visibility and control of your DrayTek product estate, even without a DrayTek Vigor router on site.

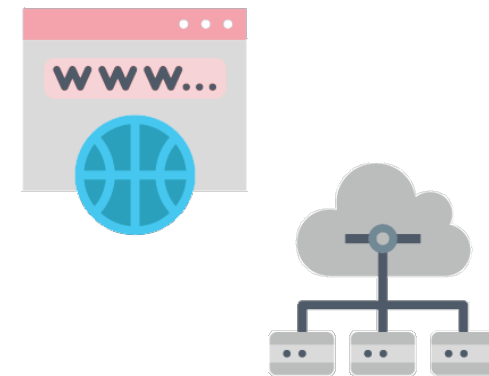
The DrayTek VigorACS management system can be used to configure and provision devices, similarly to performing these actions through the devices web interface, with a familiar menu layout in the Configuration section of VigorACS.

DrayTek's VigorACS management monitors the devices, with a Dashboard view giving a central overview of the most important information from the devices status.



### DrayTek SSL VPN - Remote Access with SmartVPN

VPNs (Virtual Private Networks) enable you to link two remote computers or networks or a remote device to your main network. VPNs use the public Internet but with an encrypted 'tunnel' carrying your private data between the two endpoints. Tunnels making use of PPTP, L2TP and IPSec protocols have been available on Vigor routers for many years and provide a simple to set up solution for your site-to-site or teleworker VPNs.



### DrayDDNS Dynamic DNS Setup

DrayTek Vigor routers support **Dynamic DNS**, which links a hostname to the current IP address of the router. By using a Dynamic DNS service the DrayTek Vigor router can automatically keep the hostname record updated so that it always points to the current IP Address of the router.

**DrayDDNS** is a new Dynamic DNS option available for DrayTek Vigor routers, which provides a hostname from the **drayddns.com** domain, for instance if your **Domain name prefix** is **companysite1** then your hostname would be **companysite1.drayddns.com**, which links to the router's current IP address, updating whenever it changes. The router's VPN server and any servers that are accessible on the Internet through the Vigor router can then be accessed through this address.



[www.habitech.co.uk](http://www.habitech.co.uk)

+44 (0)1256 638500

Habitech Ltd  
Unit K, The Loddon Centre  
Wade Road  
Basingstoke  
Hampshire  
RG24 8FL



***DrayTek***